

**£325,000**

Located on the sought-after Trees Estate in Bletchley is this three bedroom semi-detached home. The property boasts a kitchen/diner, family bathroom, lounge with a bay window and a generous rear garden. Viewing is highly recommended.

# Property Description

## ENTRANCE

Wooden door to entrance hall.

## ENTRANCE HALL

Double glazed window to front aspect. Doors to lounge and kitchen/diner, stairs to first floor, radiator, wooden floor, storage cupboard.

## LOUNGE

Double glazed bay window to front aspect. Radiator.

## KITCHEN/DINER

Double glazed double doors to rear aspect, double glazed window to rear. Range of wall mounted and floor standing units with square edge work surface over stainless steel sink with mixer tap, integrated dishwasher, integrated electric double oven and induction hob, plumbing for washing machine, space for fridge/freezer, radiator, wooden floor.

## LANDING

Double glazed window to side aspect. Storage cupboard with space for washing machine, access to loft space, doors to bedrooms and bathroom.

## BEDROOM ONE

Double glazed window to rear aspect. Storage cupboard, radiator.

## BEDROOM TWO

Double glazed window to front aspect. Radiator.

## BEDROOM THREE

Double glazed window to front aspect. Radiator, storage cupboard.

## BATHROOM

Frosted double glazed window to rear aspect. Low level w.c., wash hand basin with mixer tap, tiled bath with shower attachment over mixer tap, heated towel radiator, part tiled walls and wood cladding walls, tiled floor.

## OUTSIDE

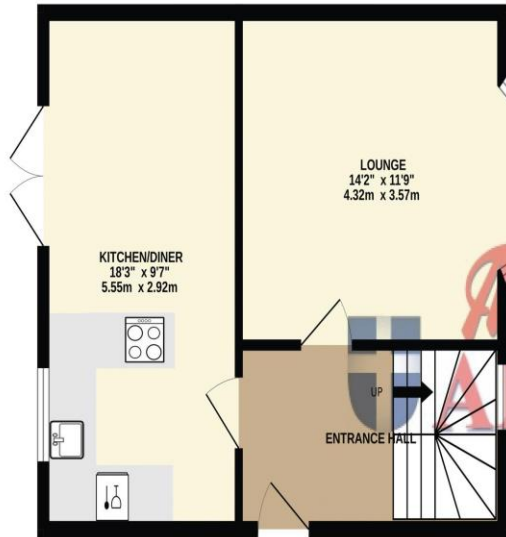
### FRONT GARDEN

Laid to lawn with bush border, pathway to front door. Covered passage leading to rear garden with storage cupboards.

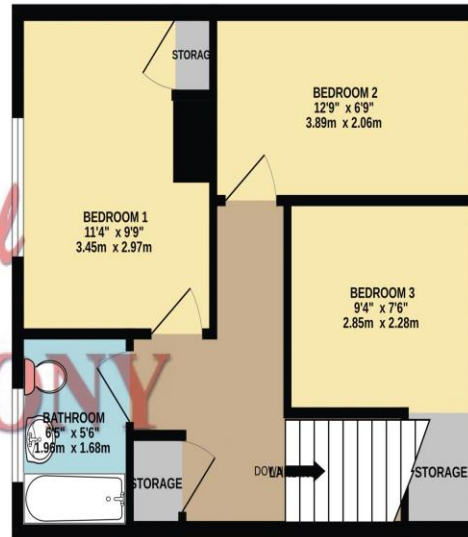
### REAR GARDEN

Enclosed by timber fencing panels, laid to lawn with patio area, side gated access, brick-built outbuilding, tap, mature trees, flower and shrub border.

GROUND FLOOR  
418 sq.ft. (38.8 sq.m.) approx.

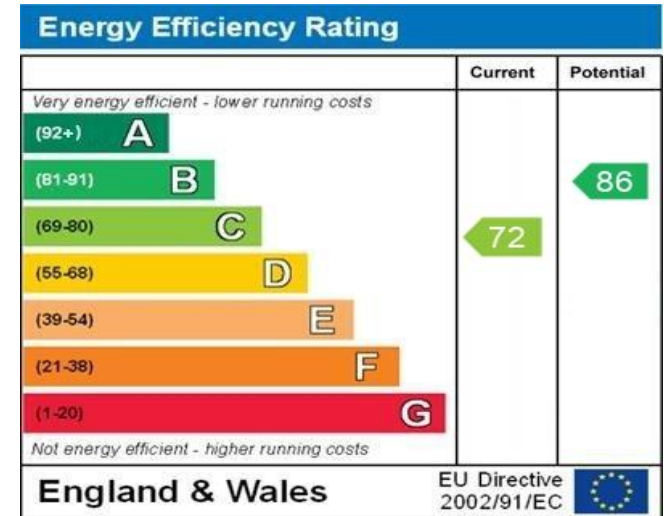


1ST FLOOR  
406 sq.ft. (37.7 sq.m.) approx.



TOTAL FLOOR AREA : 824 sq.ft. (76.6 sq.m.) approx.

Whilst every attempt has been made to ensure the accuracy of the floorplan contained here, measurements of doors, windows, rooms and any other items are approximate and no responsibility is taken for any error, omission or mis-statement. This plan is for illustrative purposes only and should be used as such by any prospective purchaser. The services, systems and appliances shown have not been tested and no guarantee as to their operability or efficiency can be given.  
Made with Metropix ©2025



WWW.EPC4U.COM

MONEY LAUNDERING REGULATIONS 2017 intending purchasers will be asked to produce identification and proof of financial status when an offer is received. We would ask for your co-operation in order that there will be no delay in agreeing the sale.

THE CONSUMER PROTECTION REGULATIONS 2008 The Agent has not tested any apparatus, equipment, fixtures and fittings or services and so cannot verify that they are in working order or fit for the purpose. A Buyer is advised to obtain verification from their Solicitor or Surveyor. References to the Tenure of a Property are based on information supplied by the Seller. The Agent has not had sight of the title documents. A Buyer is advised to obtain verification from their Solicitor. You are advised to check the availability of this property before travelling any distance to view. We have taken every precaution to ensure that these details are accurate and not misleading. If there is any point which is of particular importance to you, please contact us and we will provide any information you require. This is advisable, particularly if you intend to travel some distance to view the property. The mention of any appliances and services within these details does not imply that they are in full and efficient working order. These particulars are in draft form awaiting Vendors confirmation of their accuracy. These details must therefore be taken as a guide only and approved details should be requested from the agents

190 Queensway Bletchley Milton Keynes MK2 2ST  
01908 648 666 | bletchley@maea.co.uk